

DC-32 FULL HD 21.5 FULL HD MONITOR

mindray

DC-32

Diagnostic Ultrasound System

Primary Care with Great Vision

Full HD



DP21/DP36/DCN3 PRO/DC-40 CRYSTAL

Full HD

To deliver on the promise of quality health care within reach, Mindray always devote to contribute more for Primary Healthcare Service with exceptional capability.

As an innovator, Mindray keeps on providing the progressive solution to envision your improving mind. The DC-32 with Full HD ultrasound system delivers the practical clinical performance for primary care.



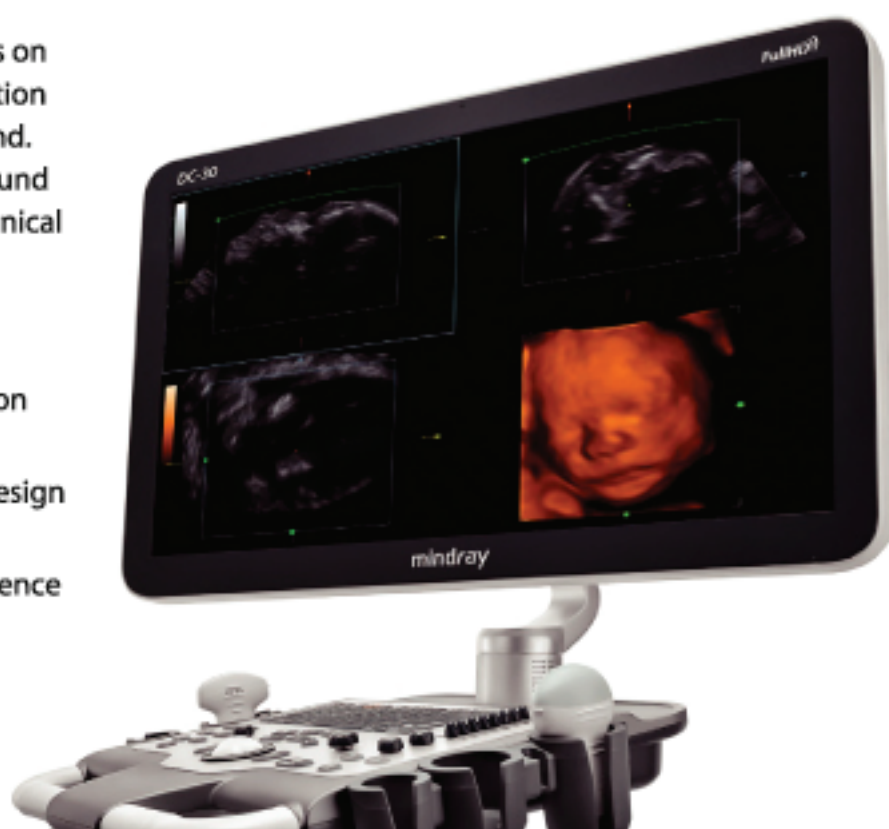
Higher Imaging Definition



Higher User-Oriented Design



Higher Reliable Dependence



Higher Imaging Definition

Full HD display with detailed clarity guarantee, the DC-32 with Full HD will help you complete your daily exams precisely and effectively.

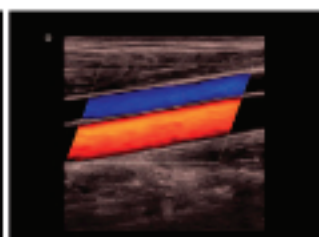
Classic imaging technologies: enhancing the quality for diagnosis

- iClear: speckle-reduction imaging technology
- PSH: Phase Shift Harmonic imaging
- iBeam: spatial-compounding imaging technology

Optimized transducers family: wide range of basic full-body clinical application coverage, including ABD/OB (3D/4D) /GYN and so on



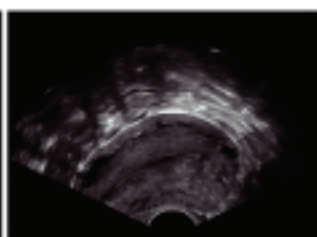
Normal Liver 2D



CCA Color



Fetal Cerebral



Uterus 2D

Full HD

Higher User-Oriented Design

Smart & auto application is easier for full-body scanning, including 3D/4D imaging

- **Smart Face:** Intelligently remove occlusions and eliminate noise for fetal face
- **Smart OB:** Accurate auto measurements for fetal parameters
- **iLive:** Realistic view of the fetus with human skin-like images
- **iNeedle:** Clear visualization of actual needle tip and shaft
- **Auto IMT:** Automatic measurement for Intima-Media Thickness

Higher Reliable Dependence

External ergonomic design for the convenience of use



EMC (Electro Magnetic Compatibility)

By obtaining the CB Test Certificate, DC-32 with Full HD reaches the strict anti-interference level assurance, which ensures the stability of its imaging quality.



Class B (Power supply requirement)

The power supply level required by DC-32 with Full HD is Class B. It can work under not only hospital power supply condition (Class A), but city power supply condition (Class B), and it offers you more safety and compatibility when you operate DC-32 with Full HD in complicated environment.



iPower (built-in battery)

Configured with a built-in battery, which has obtained the CB Test Certificate (the certification for battery reliability approval, DC-32 with Full HD supports scanning for more than 90 minutes without external power supply, which enhances the continuity of your daily work even when the power supply is poor, and ensures the mobility.

Full HD

Full HD)))
21.5" MONITOR

mindray
healthcare within reach



Mindray Building, Keji 12th Road South,
High-tech Industrial Park, Nanshan, Shenzhen 518057, P.R. China
Tel: +86 755 8188 8998 Fax: +86 755 26082680
E-mail: intl-markets@mindray.com www.mindray.com

mindray are registered trademarks or trademarks owned by Shenzhen Mindray Bio-medical Electronics Co., LTD.
©2017 Shenzhen Mindray Bio-Medical Electronics Co., Ltd. All rights reserved. Specifications subject to changes without prior notice.
P/N:ENG-BC-1D-210285e4P-Q0170725

mindray

